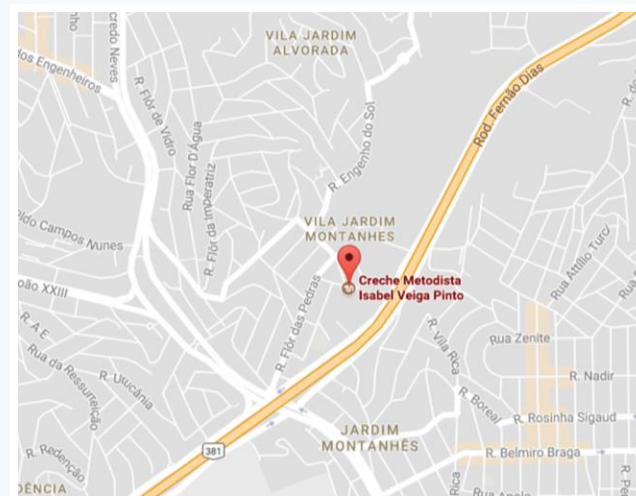
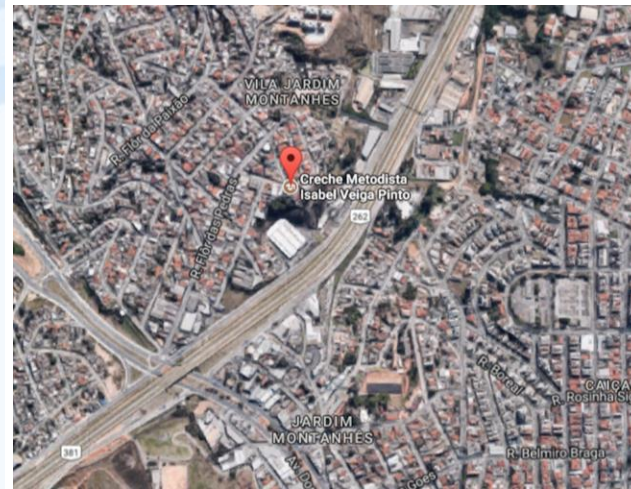


Supported by us:



Creche Metodista Isabel Viega Pinto

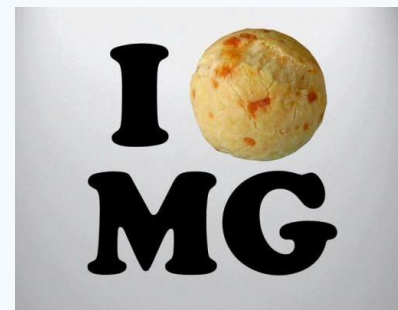




Location

The Crèche is located in an urban area of the city Belo Horizonte.

Belo Horizonte is the capital of the region of Minas Gerais.



Belo Horizonte – Beautiful View



*In true Brazilian style...
A warm welcome from the manager!!*

*The manager of the
Crèche is a retired
lawyer. Running a
Crèche rather than
enjoying retirement.*





**DO ALL THE GOOD YOU CAN.
BY ALL THE MEANS YOU CAN.
IN ALL THE WAYS YOU CAN.
IN ALL THE PLACES YOU CAN.
AT ALL THE TIMES YOU CAN.
TO ALL THE PEOPLE YOU CAN.
AS LONG AS EVER YOU CAN.**

John Wesley

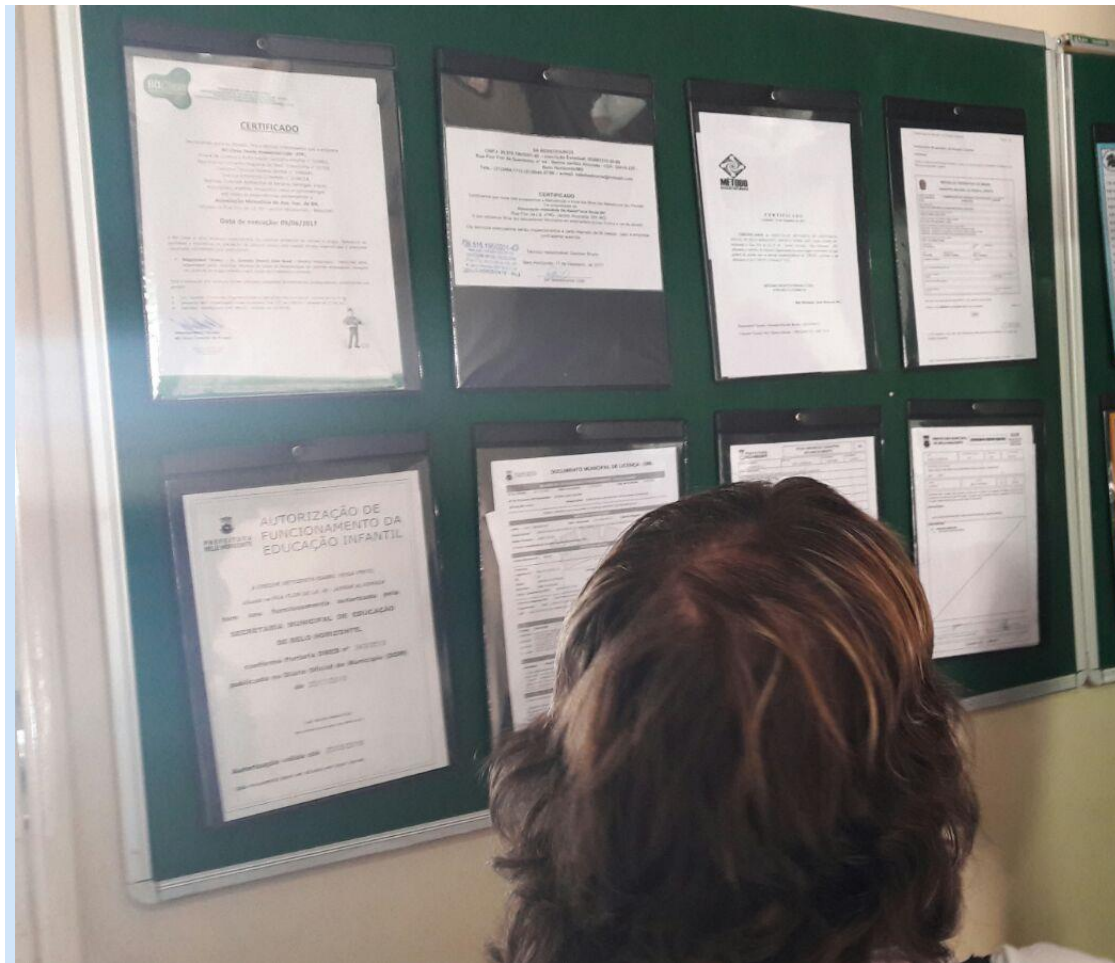
Visiting the baby room...SHHH! It's nap time!





Play time!!!

This first floor play area needs a roof to protect against the sun and sudden, heavy rains.



Compliance Certificates

The Crèche has many certificates to prove it is complying with Government regulation.

Outdoor Play Area – play equipment is very expensive in Brazil.



The surrounding area: desperate and dangerous



It is a shame you can't capture smell in images. The pavements are filthy – this is where the children would be without the crèche!



High walls and barbed wire everywhere betray how dangerous this neighbourhood is yet many children call it home.

Play area – protected with barbed wire



The Crèche takes children up to 4 years old who would be left alone all day while parents work – after all, what choice would they have?



The Crèche survives ONLY on donations!



Donations make the difference!

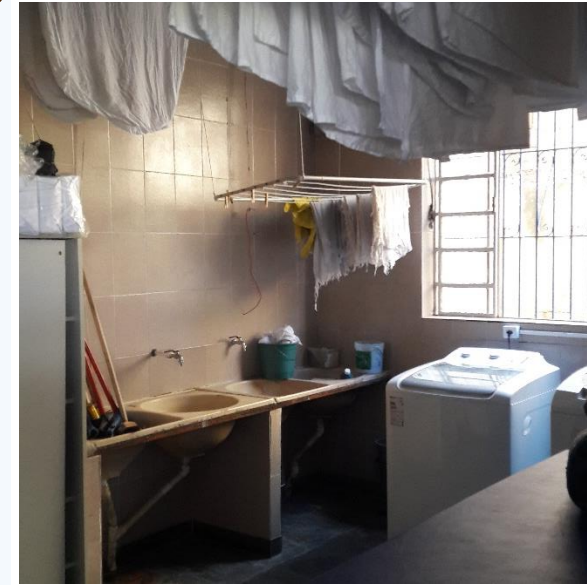
See some of what's been achieved:



New tiles, new toilets and stainless steel sinks improves hygiene.



Safe shower facilities – no more exposed wires!



A new washer/drier is in constant use!

To keep going the Crèche needs our support!

- The boxes show the priorities identified by the Crèche Manager
- Without these the government could shut them down for failing to comply to regulations
- That would mean many children left on the street and 18 staff unemployed

...can we risk letting this happen?

An industrial quality steel cooker

Electric Gates

Roof for the first floor outdoor play area

Refurbish the office


Photocopier

TV and sound system



**DO ALL THE GOOD YOU CAN.
BY ALL THE MEANS YOU CAN.
IN ALL THE WAYS YOU CAN.
IN ALL THE PLACES YOU CAN.
AT ALL THE TIMES YOU CAN.
TO ALL THE PEOPLE YOU CAN.
AS LONG AS EVER YOU CAN.**

John Wesley

A stylized landscape with rolling hills in shades of blue and white in the background, and green hills in the foreground. On the left, there is a tree with a brown trunk and a large, multi-layered purple and pink flower-like canopy. Below the tree are several orange and brown rounded shapes. The text is positioned on the right side of the image.

*The support you give is making
children's lives better in
Belo Horizonte, Brazil!*

Long may this continue! Amen!



**Igreja
Metodista**

www.metodista.org.br